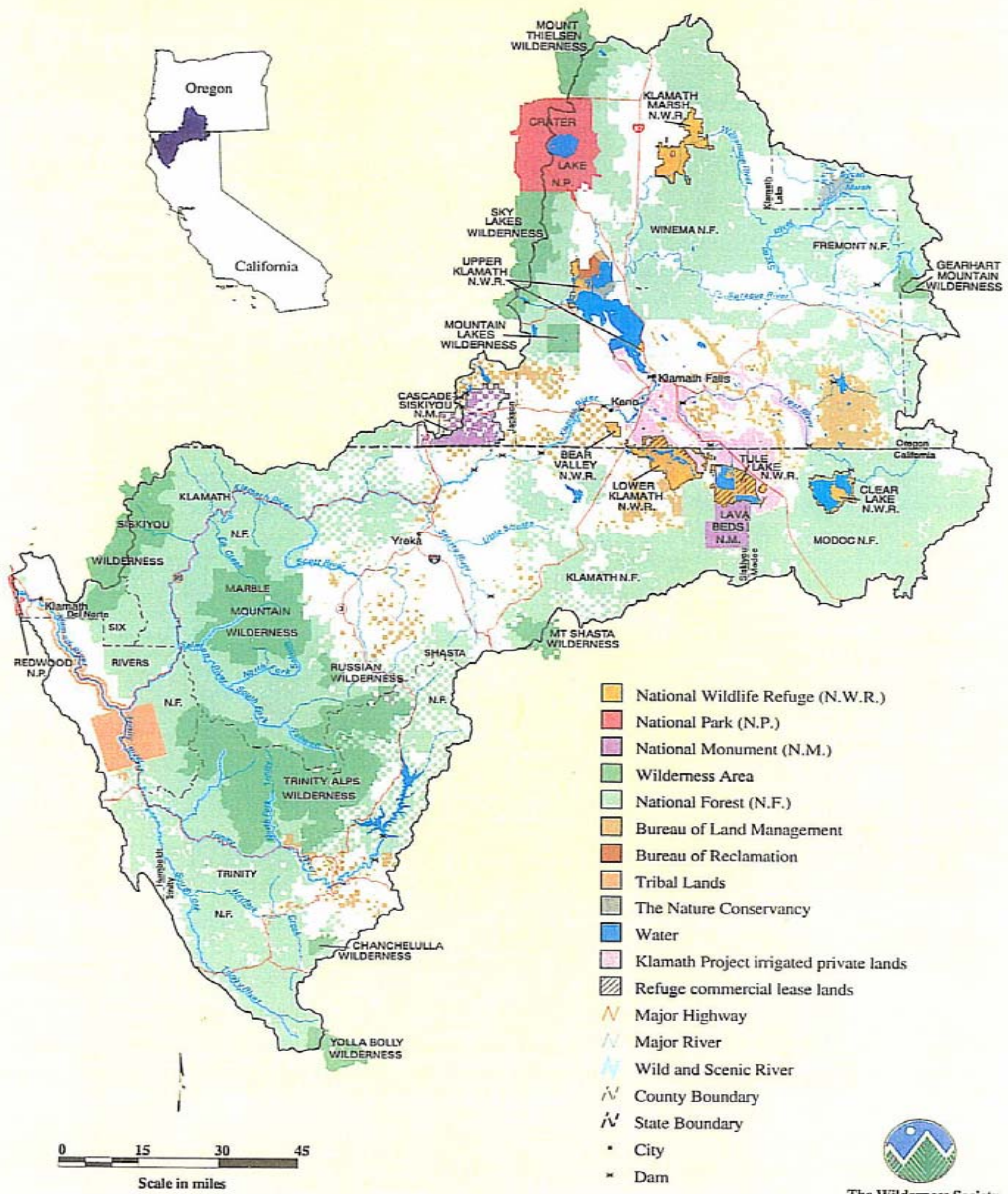


Custom and Culture:
Out-of Season Irrigation in the Scott River Valley
Copyright 2005 by Felice Pace



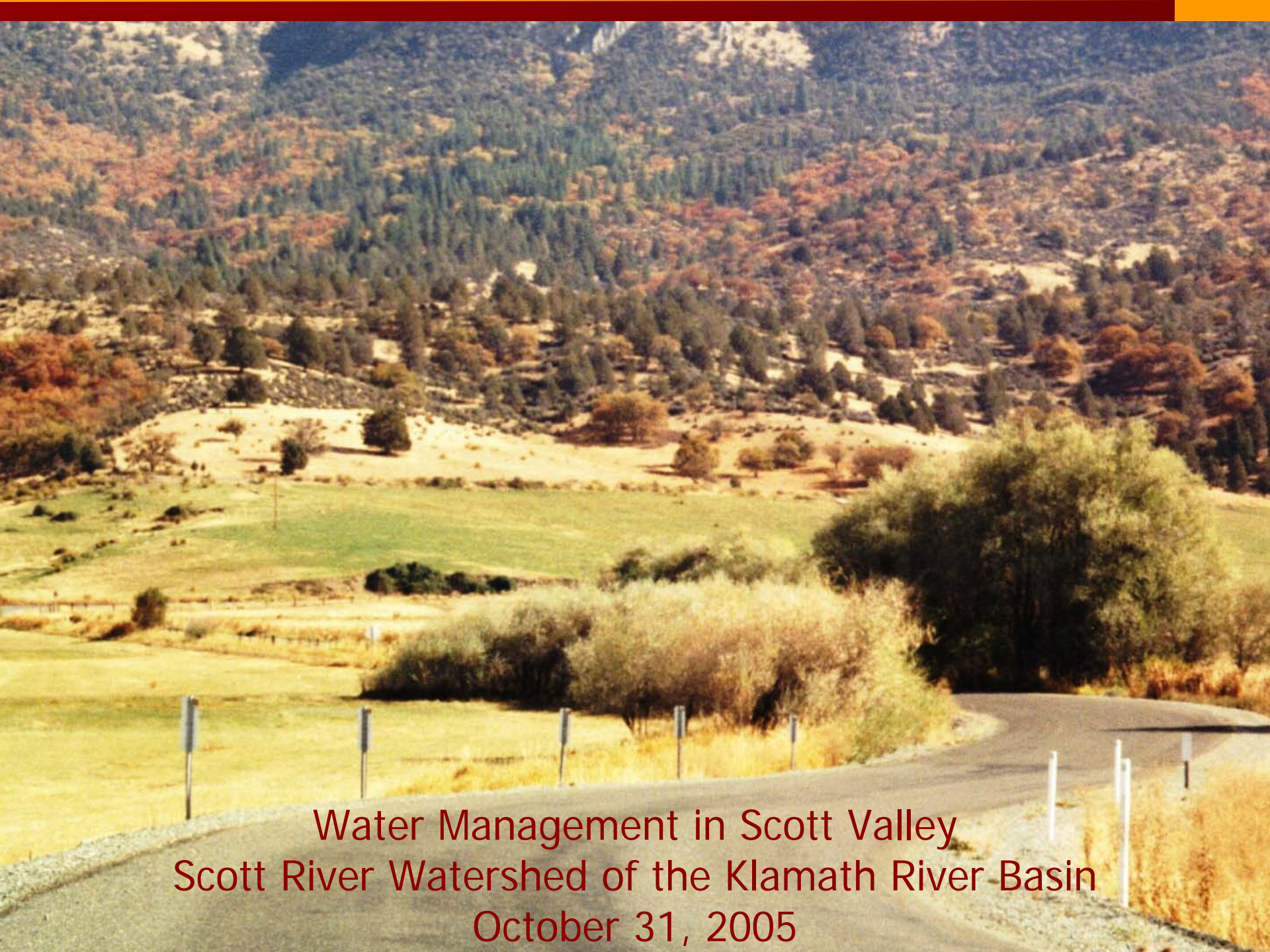
Klamath River Basin



The Wilderness Society
Center for Landscape Analysis

The Scott River Adjudication Superior Court Decree January 30, 1980

*" Water allocated by direct diversion for...
...irrigation use shall be for the season from
about April 1 to about October 15 of each
year. "*



Water Management in Scott Valley
Scott River Watershed of the Klamath River Basin
October 31, 2005

Etna Creek - Dewatered



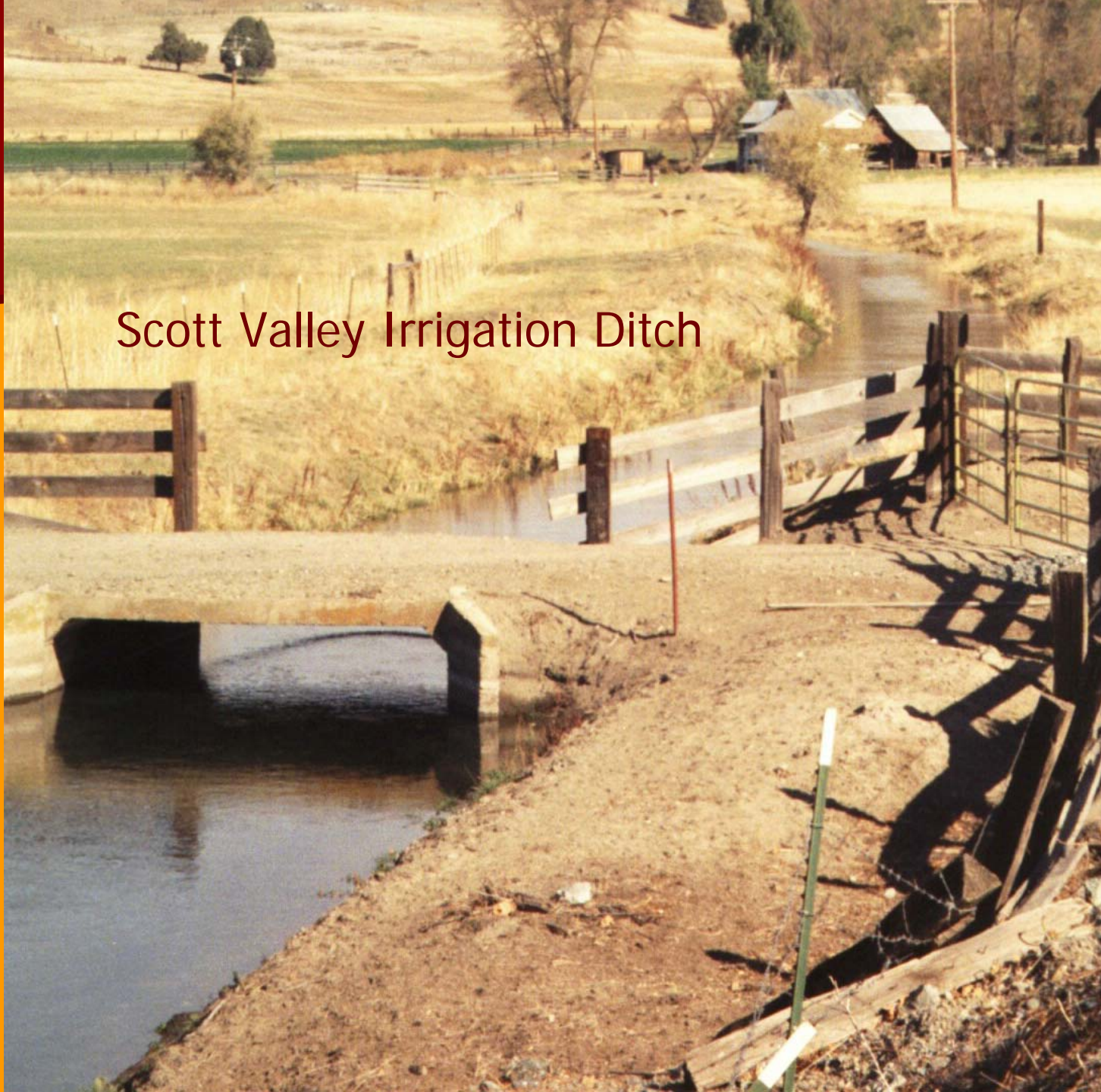
Etna Creek Diversion Ditch



Young's Diversion Dam Head of Scott Valley Irrigation Ditch

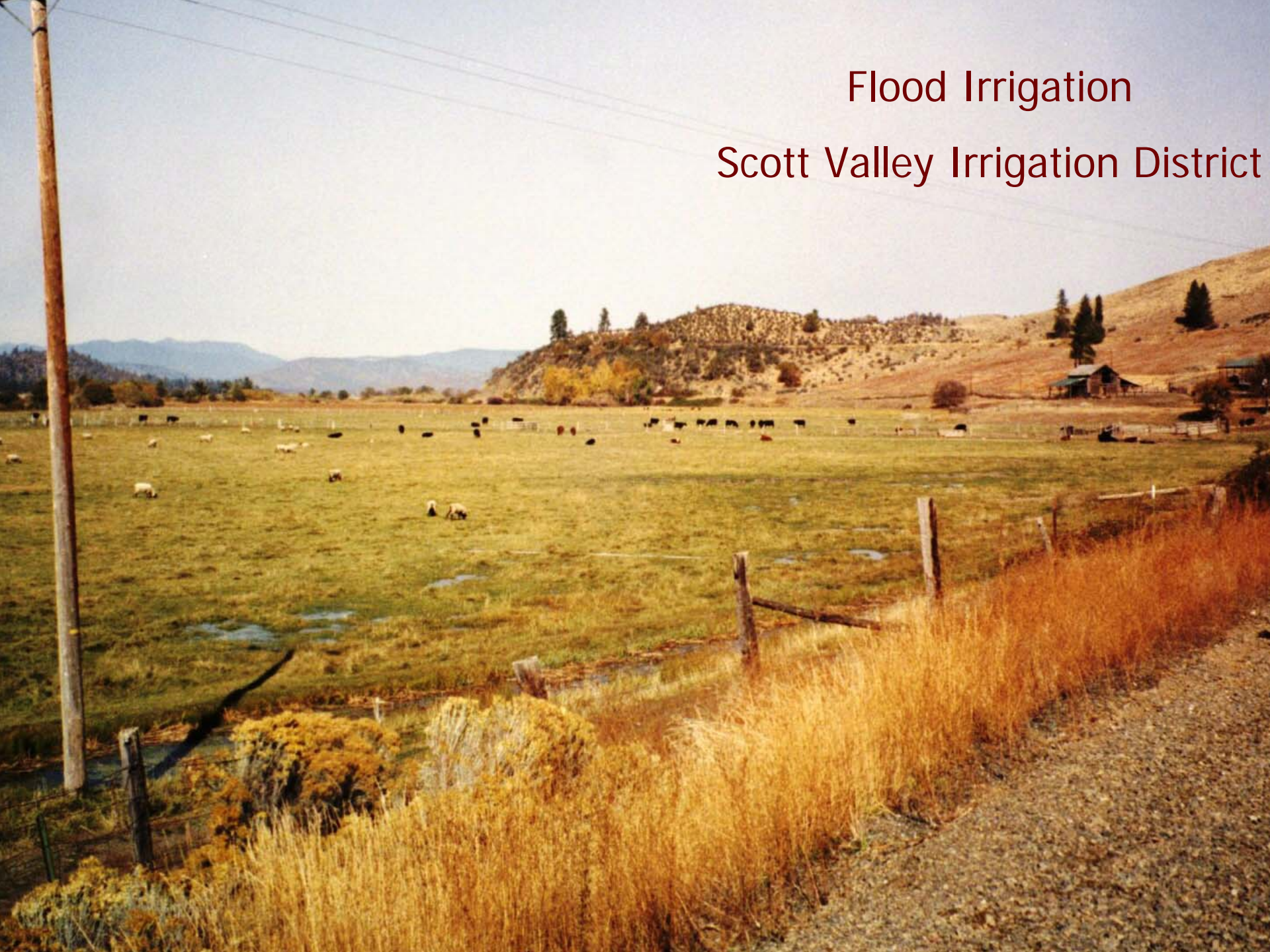


Scott Valley Irrigation Ditch



Flood Irrigation

Scott Valley Irrigation District



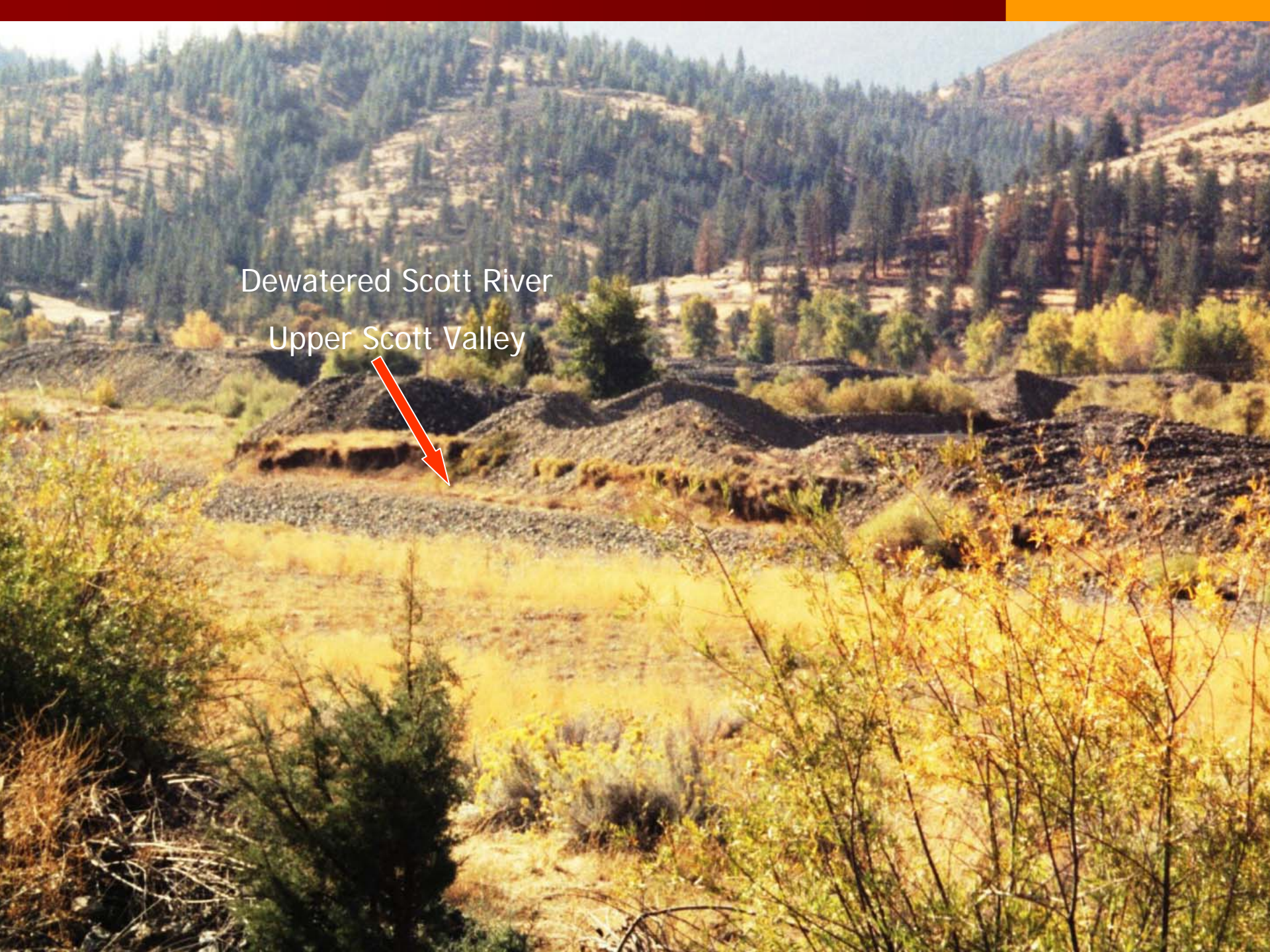
Flood Irrigation
Scott Valley Irrigation District





Stockwater Pond
Scott Valley Irrigation Distr

Dewatered Scott River
Upper Scott Valley



Farmers' Ditch



Scott River (mid-ground)

Dewatered below Farmers Irrigation Ditch (foreground)



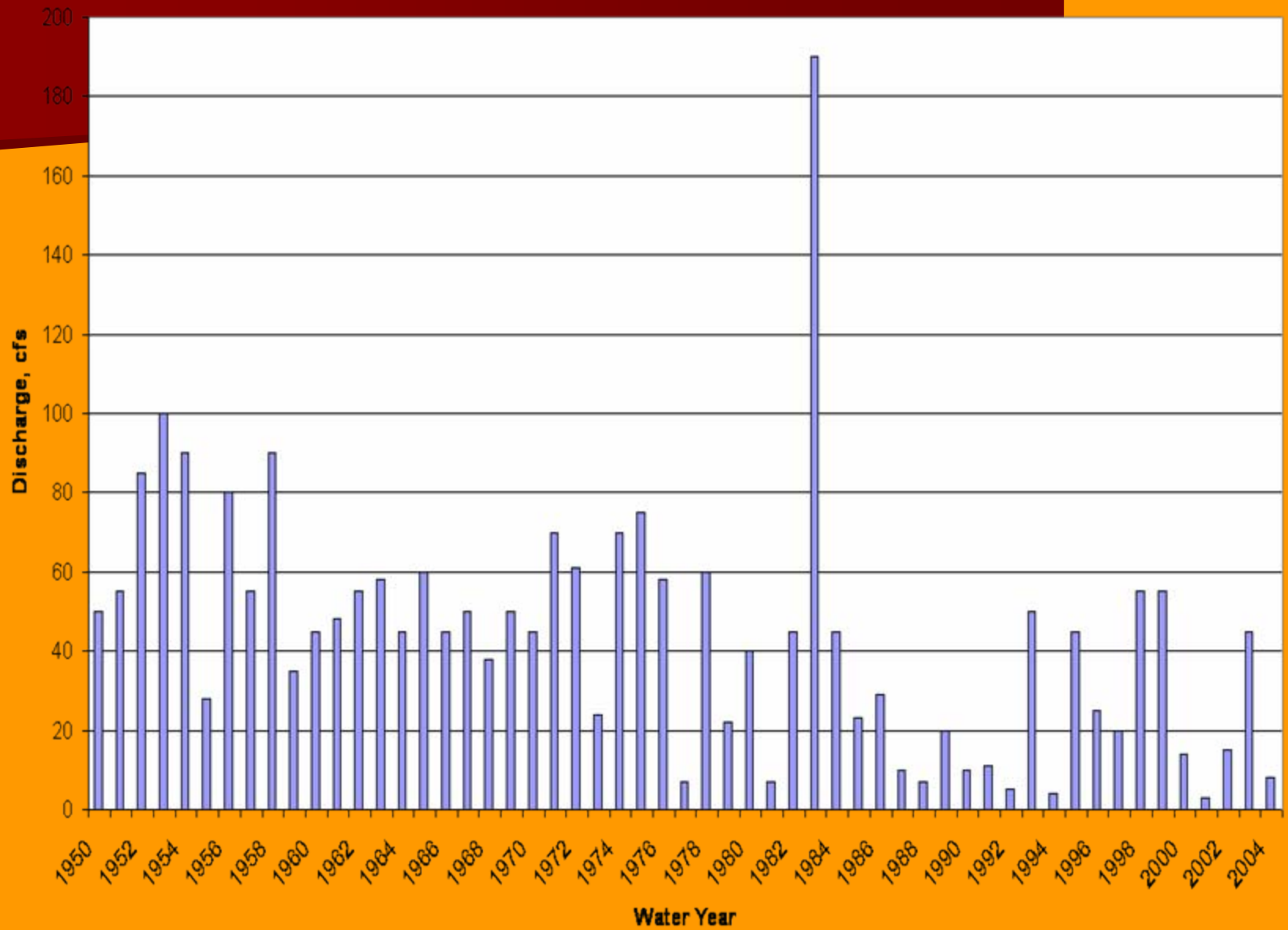
Flood Irrigation from Farmer's Ditch



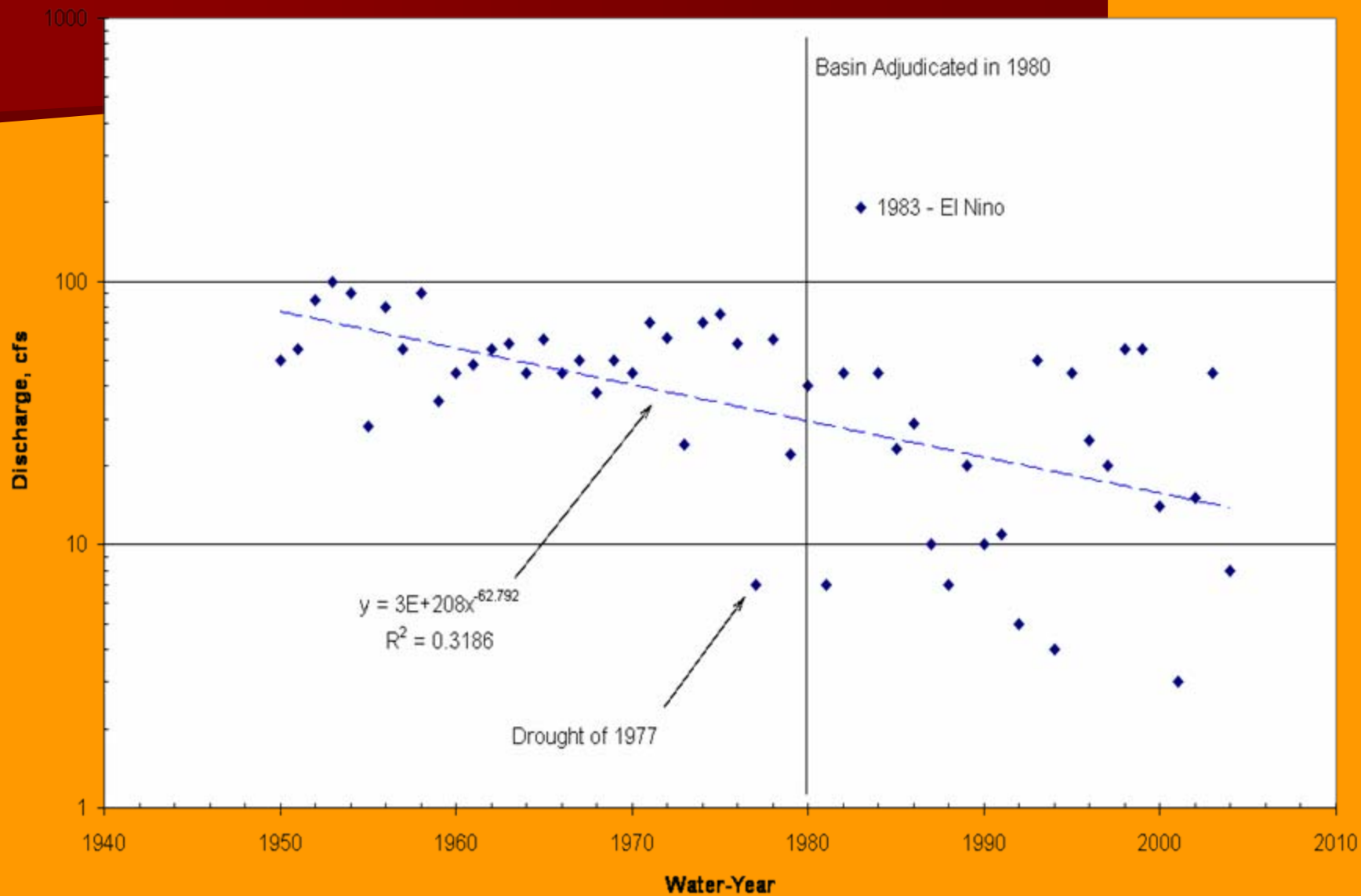
Scott River
below Scott Valley
Sept. 24, 2005



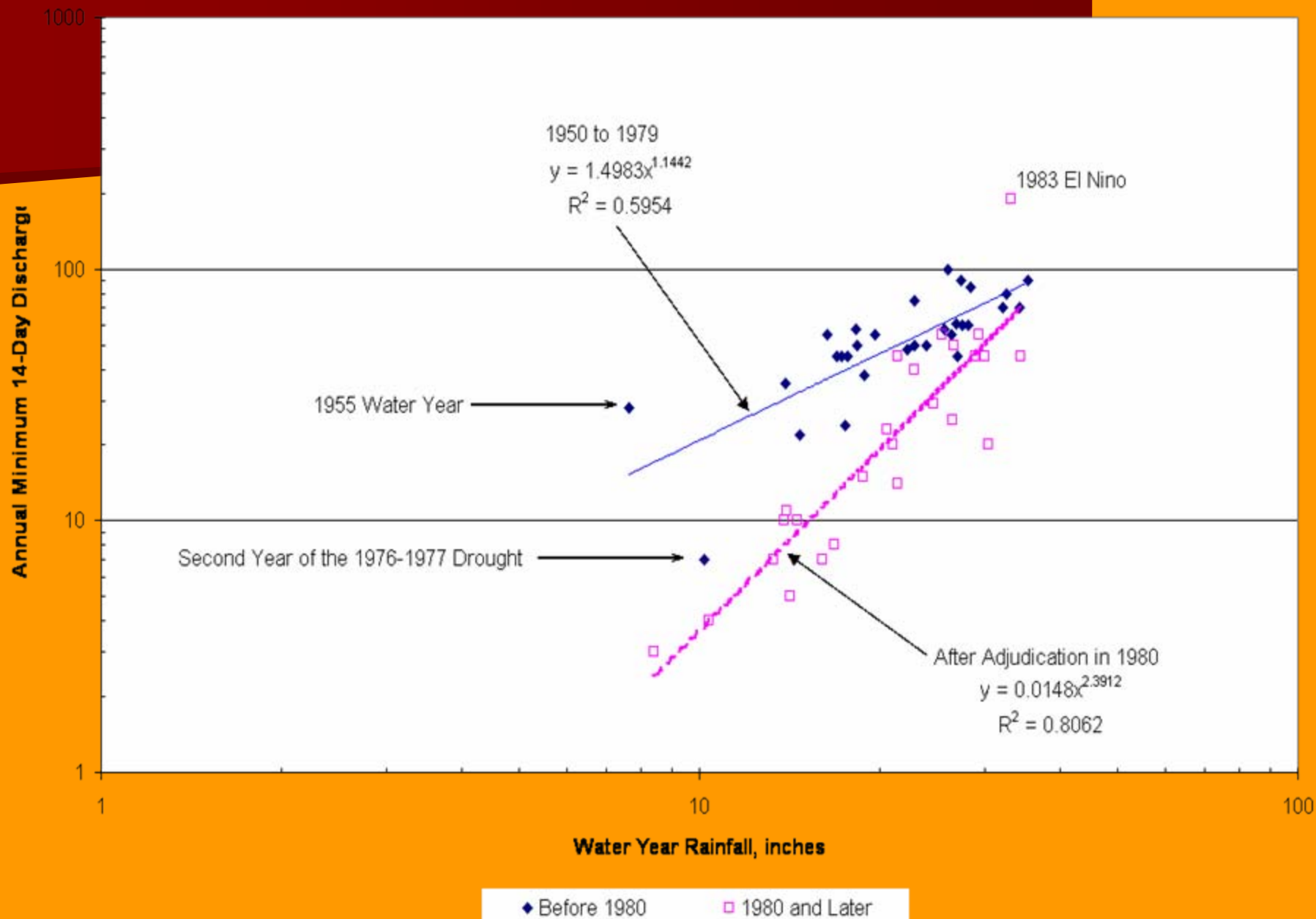
Scott River near Fort Jones Annual Minimum 14-Day Discharge



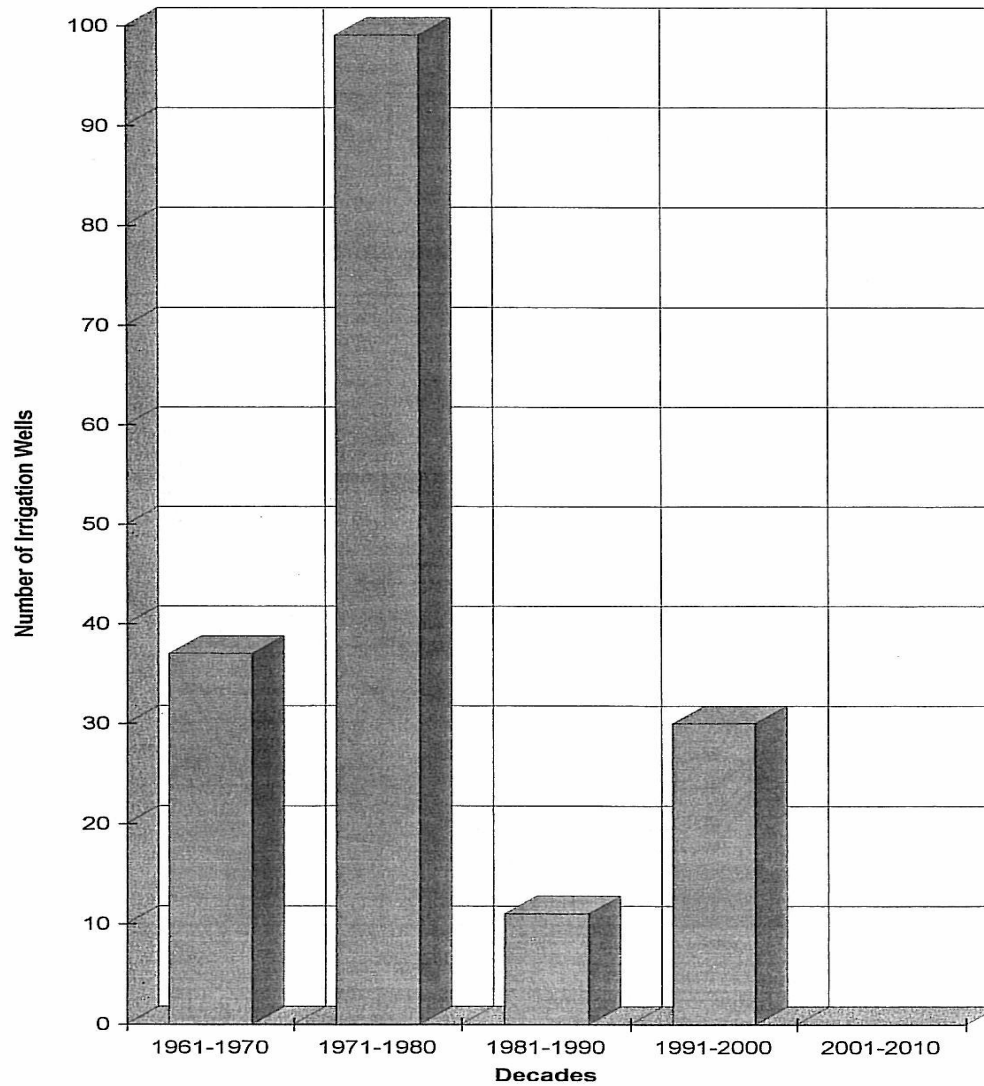
USGS Scott River near Fort Jones, Station Number 11519500 Annual 14-Day Minimum Discharge



Scott River near Fort Jones Annual Minimum 14-Day Discharge versus Water Year Rainfall for Fort Jones

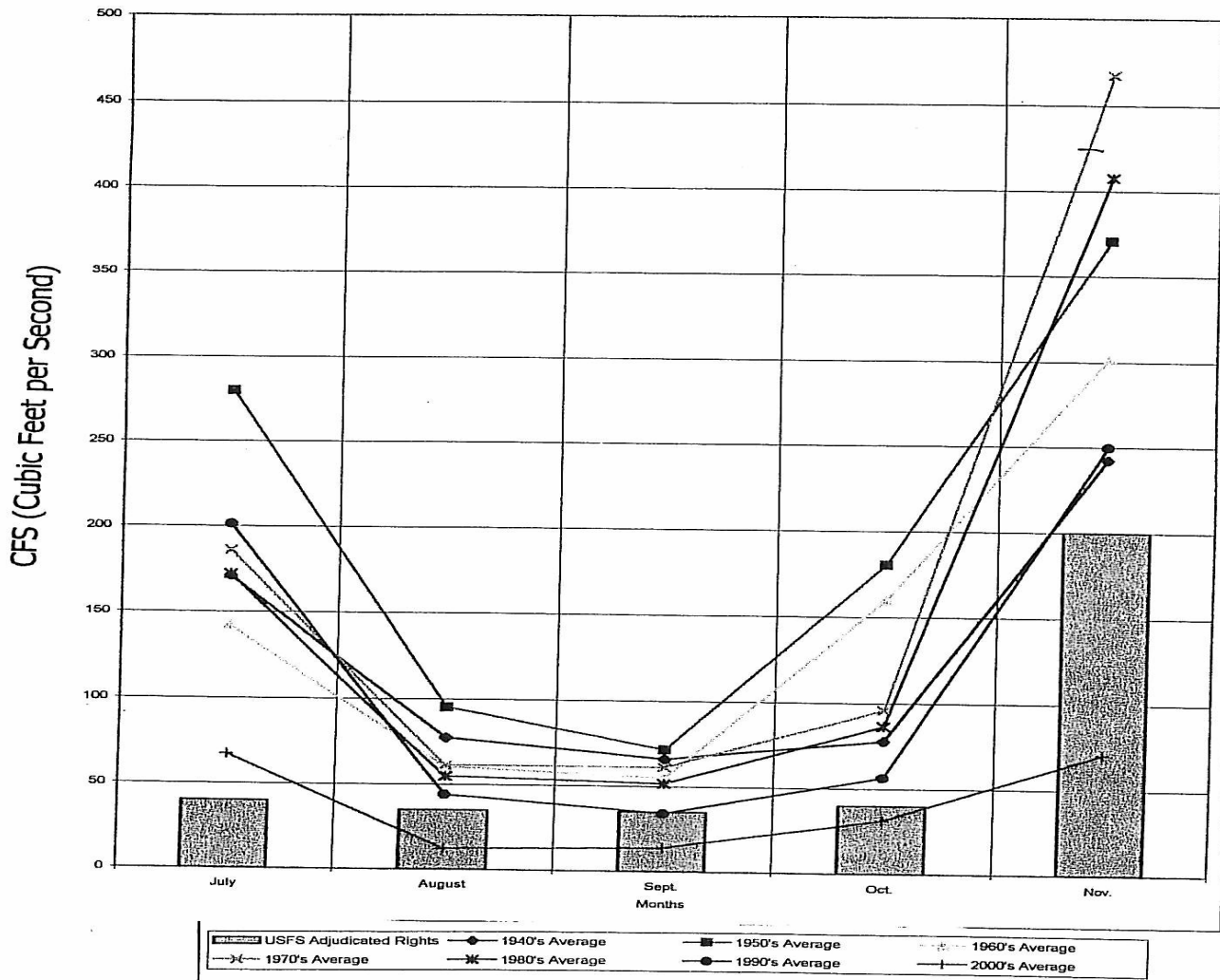


New Irrigation Wells by Decade in Scott Valley



Data obtained from: Department of Water Resources

Figure 2: Scott River Streamflows by Decade*



*Measured by the US Geological Survey at the gauging station below Scott Valley

Complaints Concerning Out-of-Season Irrigation in the Scott River Valley

- November 4, 2000
- March 29, 2001
- November 10, 2004

What will it take to get the State of California to take action?

When will California Water
Law be Enforced in the
Scott River Valley?

